



INSTALLATION GUIDE

Congratulations on the purchase of the Extendobed cargo handling system. Your Extendobed has been designed and built with the highest quality materials and workmanship to provide years of trouble-free operation. Thank you for the confidence you have placed in our company with your choice of product.

Extendobed
4242 South Eagleson Road
Boise, Idaho 83705
800.752.0706
WebSales@Extendobed.com

TABLE OF CONTENTS

:: insert final pages ::

WHAT'S INCLUDED

When unpacking your Extendobed, closely check that all parts are included. Items such as the energy chain, drawer keys, and mounting hardware, should be attached to the deck nearest the locking handle or in a drawer (if equipped) closest to the locking handle.

Please note: Mounting hardware will vary based upon the year, make and model of your vehicle, and will be bolted to bottom of shipping pallet. Refer to your vehicle in our Installation Guide for any specific mounting brackets and hardware.

EB MODEL PICKUP OR UTILITY BODY

INCLUDED HARDWARE

For all units rated at 2,000 pounds or greater, and for all Ford® pickups 2016 or later:

- (2) Anchor Plates (FIGURE ONE)
- (2) 2" x 1/2" - 13 Grade 8 Bolts
- (2) 1 1/2" x 1/2" - 13 Grade 8 Bolts
- (4) Split Lock Washers
- (4) 1/2" Flat Washers
- (4) 1/2" Nuts
- (6) 1" Tek Screws

*****See page 9 for dual anchor plate configuration.***

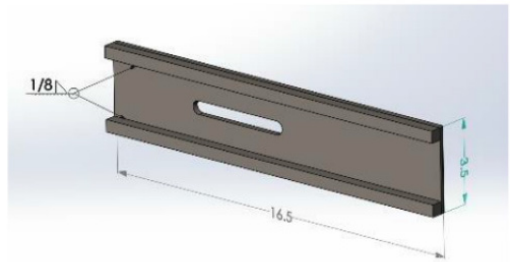


FIGURE ONE - HD ANCHOR

For all other pickups and for 1,500 pound rated units:

- (1) Anchor Plate (FIGURE TWO)
- (2) 2" x 1/2" - 13 Grade 8 Bolts
- (2) 1 1/2" x 1/2" - 13 Grade 8 Bolts
- (4) Split Lock Washers
- (2) 1/2" Flat Washers
- (2) 1/2" Nuts
- (6) 1" Tek Screws

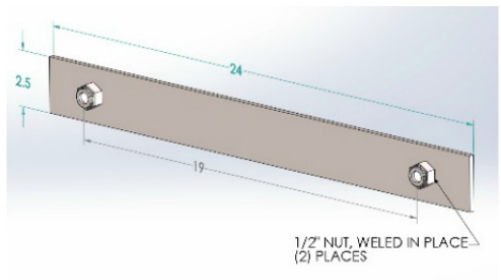


FIGURE TWO - ANCHOR PLATE

EB MODEL PICKUP OR UTILITY BODY CONT.

STEP 1

Prior to installing the Extendobed, remove all debris from the bed of your vehicle and inspect under the vehicle to locate spare tire, fuel tank, heat shield, fuel lines, and any other items that could be damaged when drilling mounting holes in the bed. ASSURE THE EXTENDOBED IS IN THE FULLY CLOSED AND LOCKED POSITION PRIOR TO LIFTING TO AVOID MOVEMENT AND POTENTIAL INJURY.

STEP 2

Lift Extendobed into the vehicle using properly rated lift, and position unit centered between wheel wells with handle $\frac{1}{2}$ " to $\frac{3}{4}$ " from tailgate when tailgate is fully closed.

STEP 3

Carefully extend the unit to expose mounting holes closest to cab, assuring there is no movement of the anchor frame that is in direct contact with bed of the vehicle. Mark and drill holes for $\frac{1}{2}$ " bolts. USE GREAT CARE WHEN DRILLING TO AVOID DAMAGE TO FUEL TANK, FUEL LINES, HEAT SHIELD, AND ALL OTHER COMPONENTS.

STEP 4

Install mounting bolts through anchor frame and bed of truck into anchor plate as shown in FIGURE THREE. Tighten bolts to 75 ft-lbs.

STEP 5

Install mounting bolts thru anchor frame and bed of truck into supplied washer and nut. Tighten bolts to 50 ft-lbs.

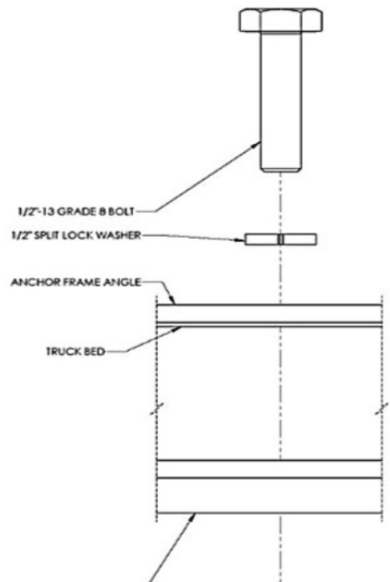


FIGURE THREE

***EB MODEL
PICKUP OR UTILITY BODY CONT.***

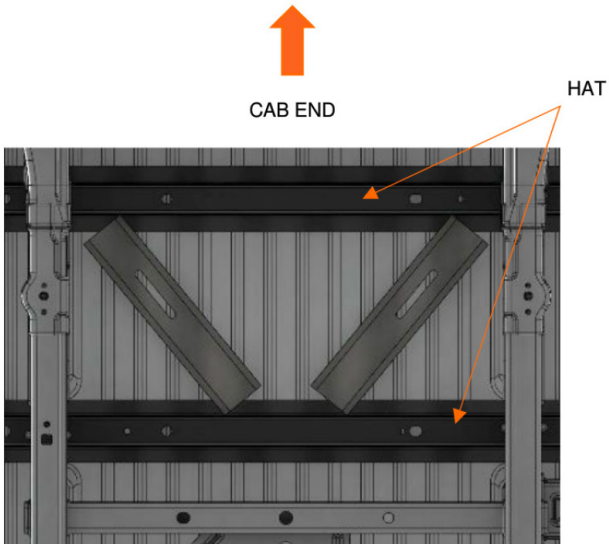
TWO TRACK GUARD ANGLES

(2) Track Guard Angles (1-½" x 1-½" x 1/8" steel angles, approximately the same length as the Extendedbed) are included and are attached to the floor of the vehicle to prevent small objects from interfering with the frame rollers. Leave a minimum ½" clear between the guard angles and the I-Beams of the Transfer Frame. The guard angles are attached to bed of the vehicle by #10 self-tapping screws that are included.



***EB MODEL
PICKUP OR UTILITY BODY CONT.***

DUAL ANCHOR PLATE MOUNTING



Anchor plates need to be angled as shown to fit between hat sections. Alternatively, spacers (not included) may be used and anchor plates may span across the hat sections, as shown below.



EBL MODEL

INCLUDED HARDWARE

- (1) Anchor Plate
- (2) 2"x ½" - 13 Grade 8 Bolts
- (2) 1 ½" x ½" - 13 Grade 8 Bolts
- (4) Split Lock Washers
- (2) ½" Flat Washers
- (2) ½" Nuts
- (6) 1" Tek Screws

For installation of EBL model into pickup, use steps 1-6 of EB installation. For installation into SUV, see vehicle specific mounting instructions below.

SUVS DODGE® DURANGO

INCLUDED HARDWARE

- (4) 2"x ½" - 13 Grade 8 Bolts
- (4) 1"x ½" - 13 Grade 8 Bolts
- (6) 1 ¼" x ½" Bolts
- (2) 1 ¼" x 3/8" Bolts
- (8) Split Lock Washers
- (2) ½" Flat Washers
- (6) ½" Nuts
- (1) Anchor Plate
- (2) Anchor Pads

The Extendedobed for your Dodge® Durango is designed to mount onto the recessed floor panel and is bolted directly to the floor. The Extendedobed is shipped with the brackets unattached.

STEP 1

After the Extendedobed is un-crated, bolt the brackets to the Anchor Frame, as shown in the drawing. There are (6) 1 ¼" by ½" bolts and (2) 1 ¼" by 3/8" bolts for fastening them. *(Note that the shortest bracket mounts at the rear of the vehicle).* Both brackets bolt on and extend toward the front of the vehicle.

STEP 2

To bolt the Extendedobed to the floor of the vehicle, place the unit in the cargo

area and make sure it fits with the seats up and the door closed. The unit should be as close to the rear hatch as possible.

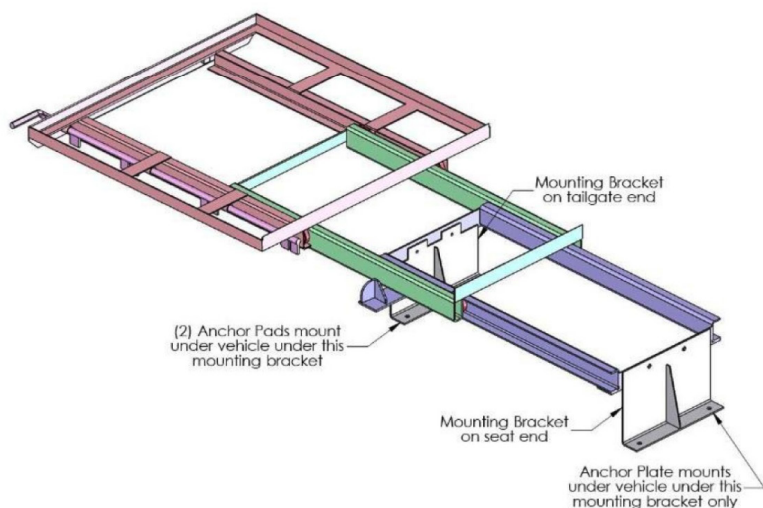
STEP 3

Extend the unit just far enough to access the bracket closest to the back seats. Double check for any interferences below the vehicle, and drill the holes through the floor (pilot hole first, then with 9/16" drill bit).

STEP 4

Place the anchor plate below the floor and install two 2" by 1/2" bolts through the floor and into the Anchor Plate. Once the back end of the Extendedobed is fastened, extend the unit and drill the holes at the hatch end of the vehicle. Use the anchor pads, and other supplied fasteners to bolt this end down.

(See diagram below for bracket orientation and installation.)



SUVS

FORD® EXPEDITION

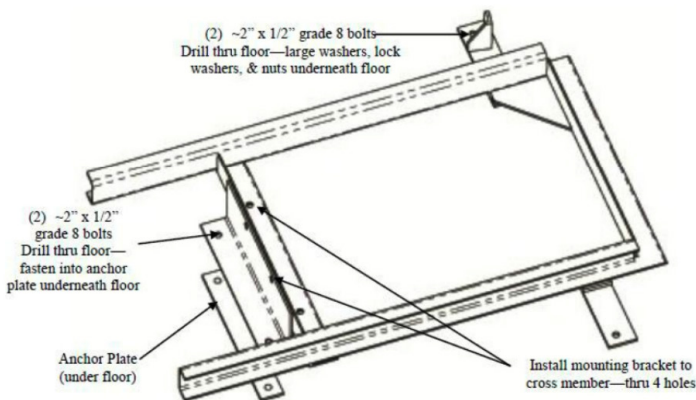
INCLUDED HARDWARE

- (2) 2" x 1/2" Bolt
- (2) 2 1/2" x 1/2" Bolt
- (4) 1 1/2" x 1/2" Bolt
- (6) 1/2" Flat Washer
- (8) 1/2" Lock Washer
- (6) 1/2" Nut
- (1) Anchor Plate
- (1) Mounting Leg

For installation in the Ford® Expedition; the plastic trim, the recessed compartment housing, and the third-row seats, including the power drive seat hardware, must be removed. This will bring the flooring system of the Expedition, level with the rear door entry. The Extendedobed for this vehicle is built with a 3" riser that mounts on the drop-down portion of the flooring system where the third seat brackets are bolted in place. Simply center the Extendedobed in the vehicle. Confirm the doors close and seats lock in upright position.

Extendedobed must be moved close enough to rear door to allow 3" riser to sit on floor shelf as shown in lower photo on back of this page.

Drill holes and install hardware, as per EB installation instructions. If the Extendedobed has a high safety screen or carrier that will interfere with installation because of the 3" risers, the Extendedobed can either be extended, allowing the Anchor Frame to be installed before the carrier, or the frame members can be disassembled and installed separately.





Remove floor trim & jack housing/floor, to allow EBL to mount directly to floor



Attach the mounting bracket, then drill two holes thru the floor (check underneath prior to drilling)



Install the bolts thru the floor, into anchor plate underneath vehicle



Drill two holes thru floor—install bolts thru floor into washers & nuts underneath vehicle

SUVS

FORD® EXPEDITION EL

INCLUDED HARDWARE

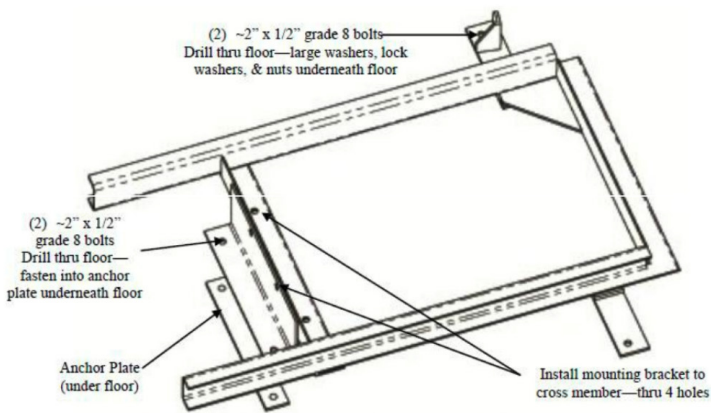
- (2) 2" x 1/2" Bolt
- (2) 2 1/2" x 1/2" Bolt
- (4) 1 1/2" x 1/2" Bolt
- (6) 1/2" Flat Washer
- (8) 1/2" Lock Washer
- (6) 1/2" Nut
- (1) Anchor Plate
- (1) Mounting Leg

For installation in the Ford® Expedition and Expedition EL; the plastic trim, the recessed compartment housing, and the third-row seats, including the power drive seat hardware, must be removed. This will bring the flooring system of the Expedition, level with the rear door entry.

The floor system of the Expedition drops a total of approximately 9" over the length of the 48" to 60" Extendedobed. A 9" riser leg bracket is provided that attaches to the Extendedobed Anchor Frame, and drops down to the lower floor level.

The leg is attached to the Extendedobed using the four 1/2" by 1" bolts with lock washers and nuts. Place the new drilled base plate toward the front of the vehicle. The Extendedobed can be set in place without the leg assembly, and then partially extended so that you can balance the unit while the leg is attached, if vertical clearance for installation is an issue. Once the leg is attached, the standard installation instructions apply.

(See diagram below.)





Remove floor trim & jack housing/floor, to allow EBL to mount directly to floor



Attach the mounting bracket, then drill two holes thru the floor (check underneath prior to drilling)



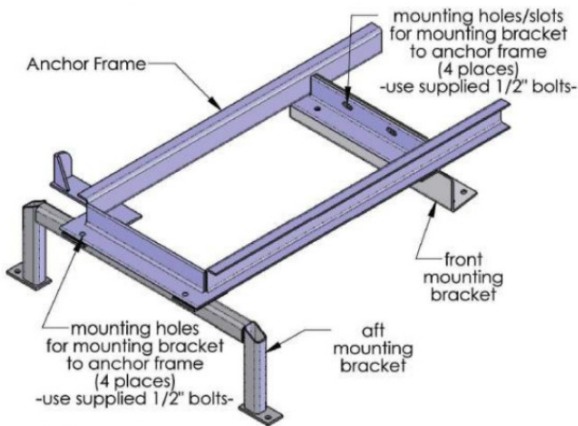
Install the bolts thru the floor, into anchor plate underneath vehicle



Drill two holes thru floor—install bolts thru floor into washers & nuts underneath vehicle

SUVS FORD® EXPLORER / INTERCEPTOR

Ford® Explorer and Explorer Interceptors are designed to use mounting brackets at the tailgate and cab end. Remove subfloor above spare tire to allow access to mounting points. At the tailgate end the large bracket straddles the spare tire and bolts thru the floor to washers and nuts. The cab end will bolt into the existing seat bolt locations (x-brace in Interceptor).



This picture shows the anchor frame and the mounting brackets only—the unit does not have to be disassembled—this is shown this way only for clarity—(uses a total of (8) 1/2 x 1-1/4" bolts)



The front mounting bracket should be pre-assembled to these third seat posts first (the third seats must be removed) — install loosely — insert the Extendo Bed unit and loosely mount the anchor frame to the front mounting bracket — mount the aft mounting bracket to the anchor frame — tighten all fasteners

The aft mounting bracket will fit around the spare tire and mount to the recessed floor—drill holes thru the floor thru the bracket—fasten with (2) 1/2 x 1-1/2" bolts, w/ washers and nuts underneath

-NOTE: The spare tire is not accessible w/ the Extendo Bed in place.-



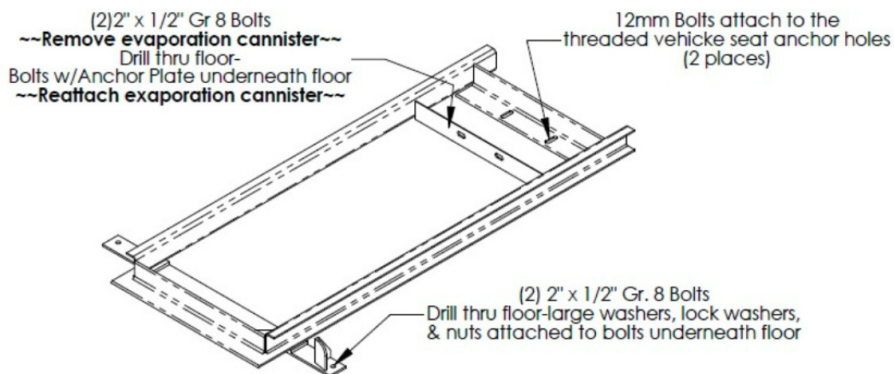
SUVs
GM® SUBURBAN / YUKON XL

INCLUDED HARDWARE

- (2) 2" x 1/2" Bolt
- (6) 1/2" Flat Washer
- (6) 1/2" Lock Washer
- (2) 1/2" Nut
- (4) 12mm Bolts

The Extendedobed and the Extendedobed Light are designed to install in year 2007 and newer GM® Suburbans utilizing the third-row seat anchor inserts in the floor of the Suburban.

All units installed in Suburbans year 2007 and newer that will include a secondary anchor system that will include a second set of drill points through the floor of the Suburban, and an anchor plate mounted beneath the floor, sandwiching the Suburban floor between the Extendedobed and a sub floor anchor plate. This will require unbolting an evaporation canister beneath the Suburban floor to allow drilling and bolting of the secondary plate. This is a simple procedure. Instructions follow:



SUVS
GM® TAHOE / YUKON

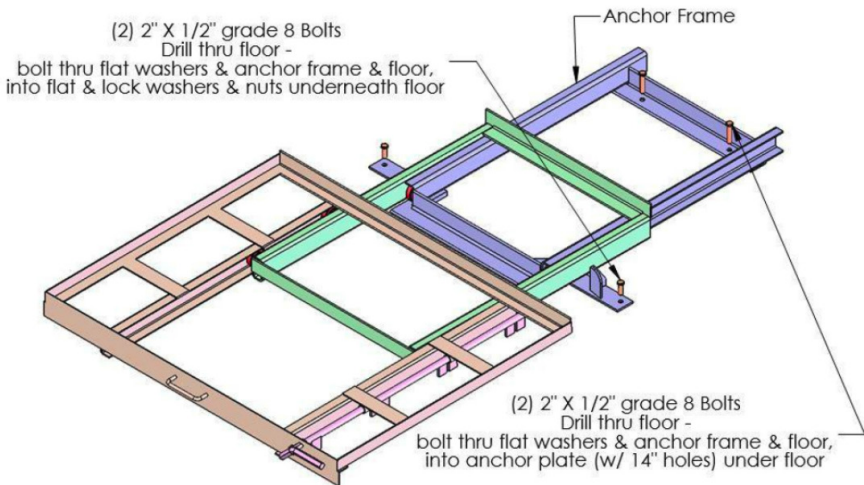
INCLUDED HARDWARE

- (4) 2" x 1/2" Bolt
- (4) 1/2" Flat Washer
- (4) 1/2" Lock Washer
- (2) 1/2" Nut
- (1) Anchor Plate

Remove third seat and false cargo floor. The end of the anchor frame will sit over the plastic trim at the tailgate center Extended in vehicle.

Unlatch and slide unit out far enough to expose two anchor holes.

Drill and fasten into anchor plate - (may have to remove evaporation cannister for easier access - re-install) drill holes at tailgate end and fasten (will be easier if spare tire is dropped down out of the way).



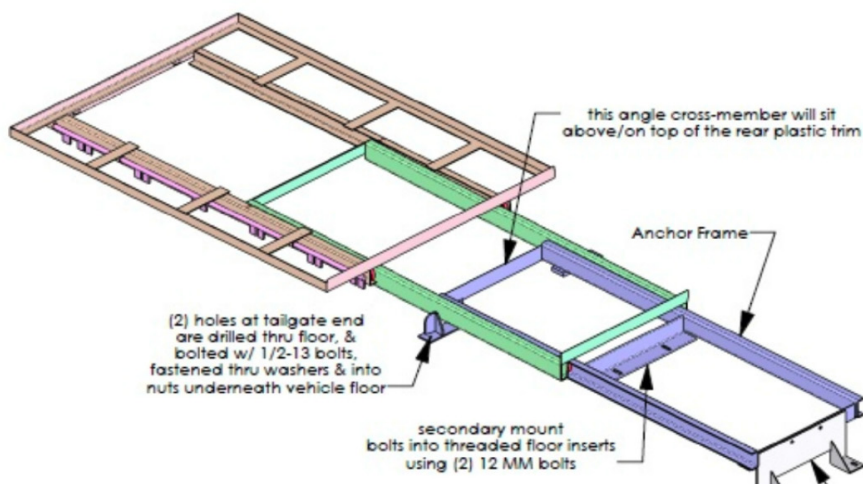
For installation of long Extendedobed units, generally more than 37½" in the Chevy® Tahoe or GMC® Yukon:

INCLUDED HARDWARE

- (2) 2"x ½" Bolt
- (6) ½" Flat Washer
- (6) ½" Lock Washer
- (2) ½" Nut
- (4) 12mm Bolts

A separate extension leg is provided to transfer the weight of the Extendedobed closest to the front of the vehicle to the lower floor. The leg assembly is generally not attached to the basic Extendedobed frame during shipment, but is bolted to the anchor frame after delivery.

The leg assembly bolts to the anchor frame of the Extendedobed, with the foot pad of the leg system toward the front of the vehicle. This will be a four-bolt connection, using four (4) ½" by 1", grade eight bolts that are included with your installation parts. Once the leg is attached to the anchor frame of the Extendedobed, either before the unit is placed in the truck, or after, whichever is most convenient, the standard bolting and assembly instructions included in the Installation Guide apply.



EBL
CHEVY/GMC TAHOE/SUBURBAN/YUKON/YUKON XL

COMPONENTS FOR INSTALLATION

- (1) EBL sliding platform assembly
- (2) Vehicle-Specific Mounting Brackets
 - (1) Cab-End mounting foot
 - (1) Tailgate-End mounting foot

Hardware Package

Tailgate-End Mounting – Vehicle Sheet Metal Penetration

- (4) ½”-2” Bolts for Tailgate-End Mounting Feet
- (4) 2” OD Oversized Washers for Underneath Vehicle
- (4) Lock Washers
- (4) ½” Nuts

Tailgate-End Mounting – Bracket to EBL

- (2) ½”-1.25” Bolts
- (4) ½” standard washers
- (2) Lock Washers
- (2) ½” Nuts

Cab-End Mounting – Vehicle 3rd Row Seat Mounting Bosses

The Cab-end mounting bracket will occupy the 3rd row seat mounting bosses

This requires the use of the stock 3rd row seat mounting bolts for bracket installation

Cab-End Mounting – Bracket to EBL

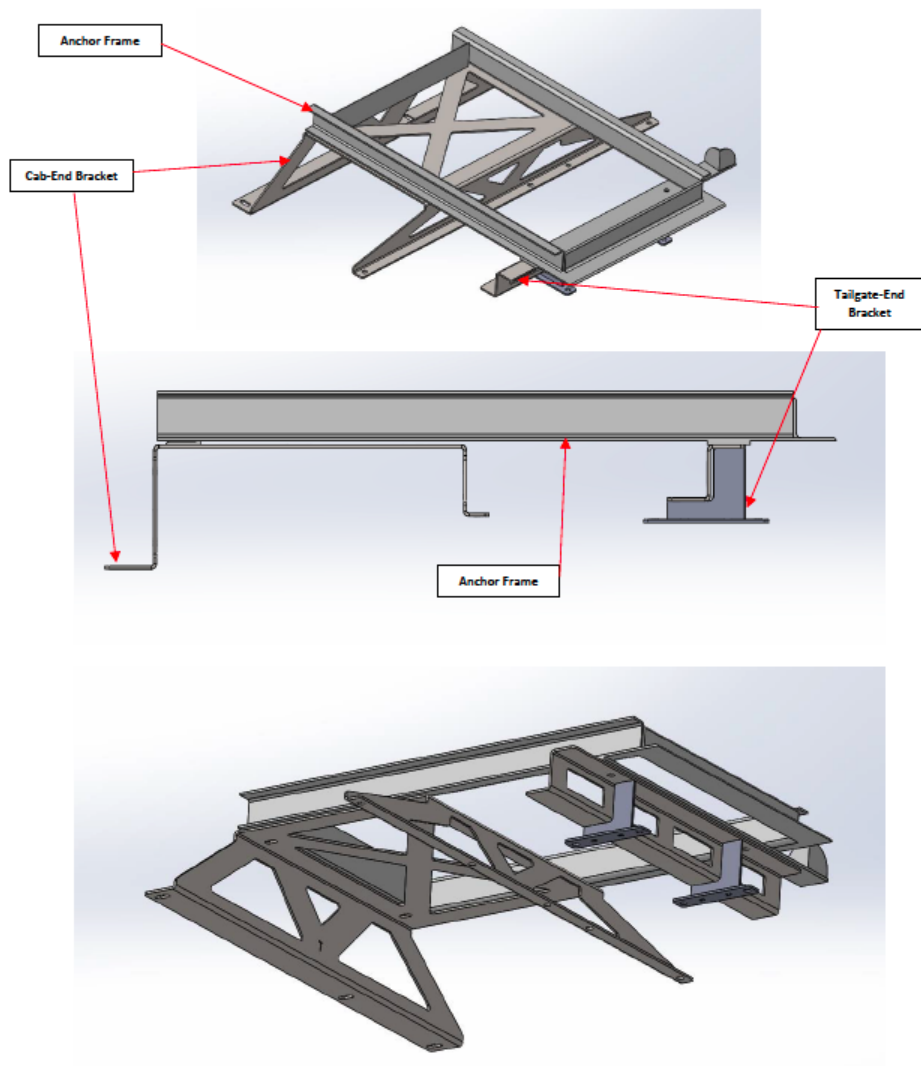
- (2) ½”-1.25” Bolts
- (4) ½” standard washers
- (2) Lock Washers
- (2) ½” Nuts

GENERAL STEPS

1. Expose the vehicle cargo-area sheet-metal
2. Un-nest the EBL Anchor Frame
3. Assemble the Cab-End bracket to the Vehicle 3rd row seat mounting bosses
4. Assemble the Tailgate end bracket to the EBL Anchor Frame
5. Fit the EBL into the vehicle, aligning with the Cab-End bracket, and mark the penetration locations for the Tailgate-End bracket - drill the sheet-metal
6. Use the provided hardware to mount the Extended bed

EBL
CHEVY/GMC TAHOE/SUBURBAN/YUKON/YUKON XL CONT.

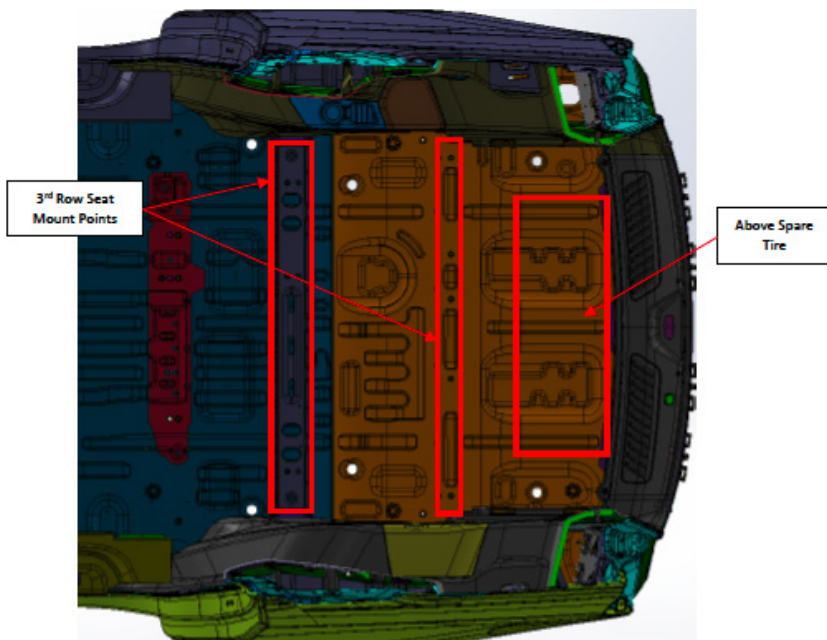
Anchor Frame Orientation Inside Vehicle:



EBL
CHEVY/GMC TAHOE/SUBURBAN/YUKON/YUKON XL

INSTALLATION

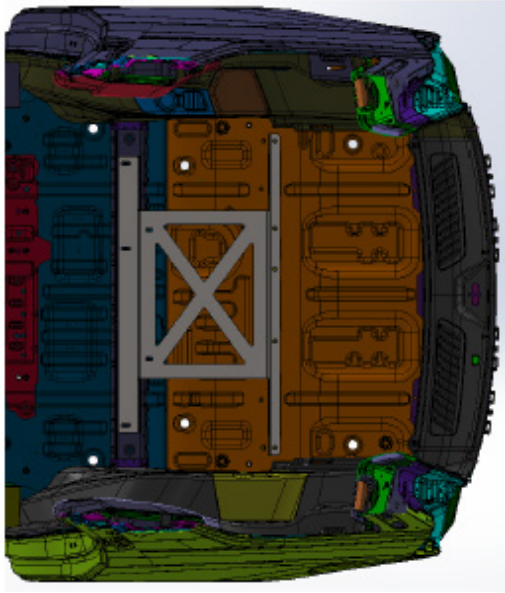
1. Strip the vehicle Interior down to the sheet metal in the rear cargo area
 - a. The Extendedobed is designed to bolt to the vehicle sheet-metal interior. To ensure proper fitment and hole placement, the vehicle sheet-metal must be exposed in two places:
 - i. Above the spare tire
 - ii. At the 3rd row seat mounting points



NOTE: At the "Above Spare Tire" area – installer may need to remove gray sound-insulation/panel gap finish material (gray cake frosting). Mounting Brackets must contact vehicle sheet metal.

2. Install the Cab-End mounting bracket. This will align with the existing 3rd row seat mounting points

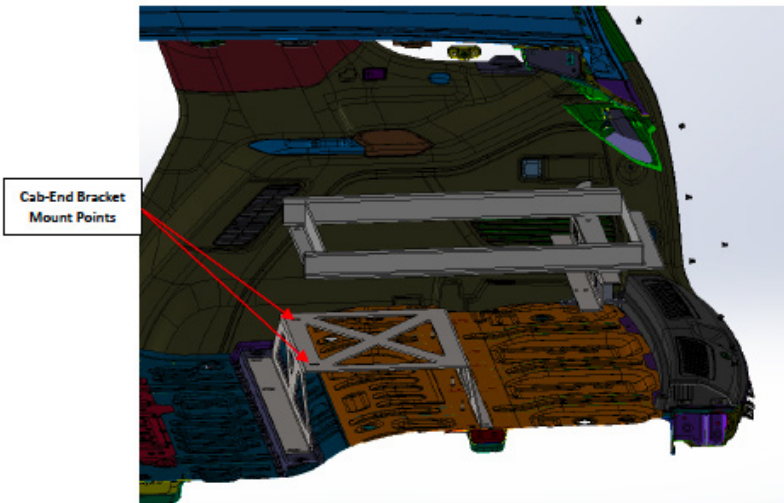
- a. Use stock 3rd row seat mount bolts to attach the bracket
- b. Slotted holes face towards vehicle front



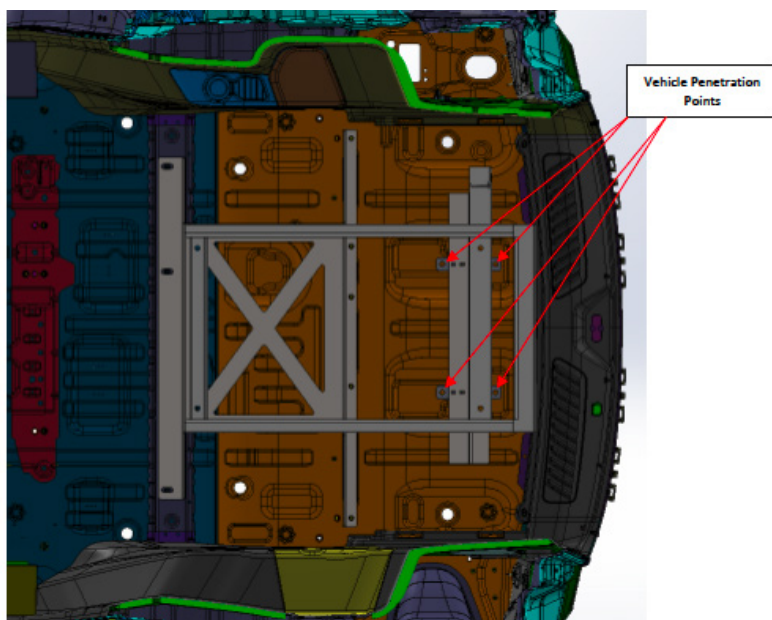
3. Assemble the Tailgate-End bracket to the Anchor Frame using the provided hardware

4. Bring the Tailgate-End bracket and Anchor Frame Assembly into the vehicle

5. Align the Anchor Frame with the Cab-End bracket mounting points



6. Once the Anchor Frame is centered in the vehicle, use the tailgate-end bracket as a reference to mark the vehicle penetration points above the spare tire area.



7. Penetrate the vehicle sheet metal and install the tailgate-end bracket to the floor of the vehicle using the provided hardware listed above.

8. Ensure ½" grade 8 hardware is torque to: 80 lb-ft

- a. @ Vehicle Penetrations
- b. @ Anchor Frame to Cab-End and Tailgate-End Brackets

HARDWARE QUANTITY TOTALS - '21 TAHOE/SUBURBAN

4X ½-2 Bolt

4X ½-1.25 Bolt

8X ½ Nuts

4X 2" OD Oversize Washer

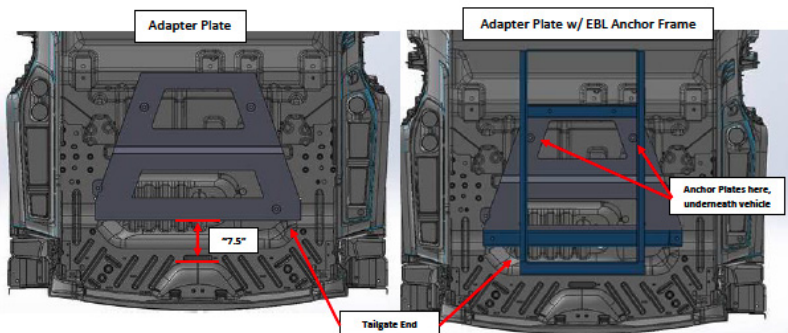
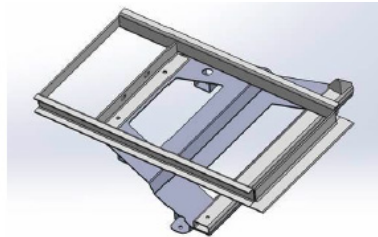
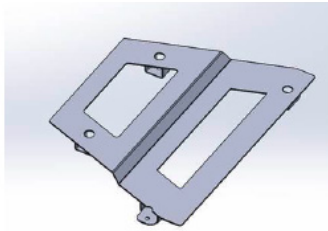
8X 1/2 standard washer

8X ½ Lock Washer

18+ EXPEDITION SHORT WB EBL-1040 MOUNTING PLATE ADAPTER

INSTALLATION

- 1) Remove the Vehicle interior flooring from the cargo area behind the 2nd row seats
 - a. There should be a sheet-metal bowl visible that the mounting adapter will sit over top
- 2) Position the mounting adapter over top of this bowl
 - a. The wide-end of the platform will be facing toward the vehicle tail gate
 - b. The leading face (tail gate end) of the mounting adapter should be about 7.5" from the front facing edge of the tailgate latch pocket
 - c. Center the mounting adapter between vehicle left and right
- 3) Use the Mounting Adapter as a template to mark and drill the mounting holes
 - a. The 1.5" diameter access holes over the mounting feet are the correct drill template feature
- 4) Use the supplied grade 8 hardware to mount the adapter into the vehicle.
 - a. Two oversize washers will be used underneath the vehicle at the tailgate end
 - b. Two Heavy Duty Anchor Plates (3.5"w x 16"l x .25"t) will be used underneath the vehicle at the cab end
- 5) Once the Mounting Adapter Plate is secured, install the EBL Anchor Frame to the adapter.



ENERGY CHAIN INSTALLATION

The Extendobed will be shipped with the lead end connector of the energy chain already attached to the underside of the cargo platform. After the Extendobed has been installed in the vehicle, extend the bed fully from the vehicle. Attach the chain to the connector.



NOTE: It may be easier to install the cable(s) into the chain prior to assembly.



Lay the unanchored end of the chain in the vehicle.



Allow the chain to make a “loose” 180-degree arc back into the vehicle. Make sure that the chain is inline and parallel to the travel of the Extendobed.

Fasten end of chain to vehicle floor, using the self-tapping screws.

ADDITIONAL QUESTIONS

If you have any additional questions during installation please give us a call at (800) 752-0706 Monday thru Friday, 8:00 am to 5:00 pm, Mountain Standard Time (MST).